

- a) Wall
- b) Vinyl
- c) Shower Pan
- d) Concrete

# fusion shower pan recessed into concrete with vinyl installation guide

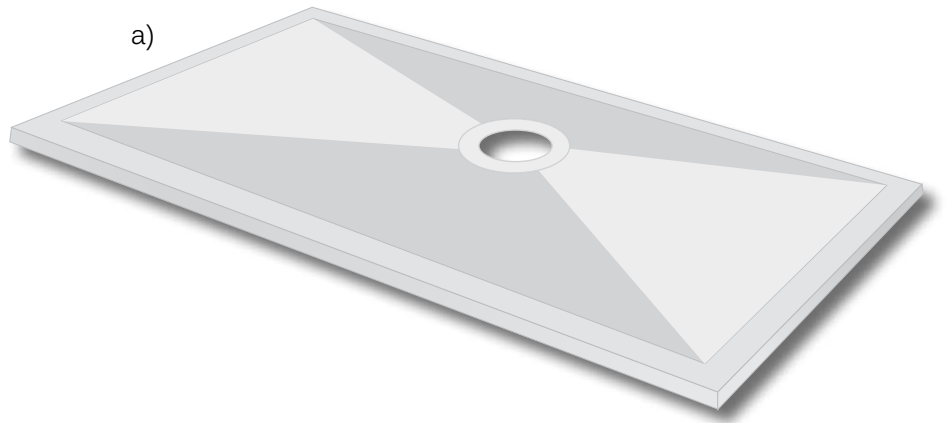
fusion shower pan recessed into concrete with vinyl

## Required Components (included)



- a) Fusion Standard Shower Pan
- b) Vinyl Drain

15 - 2 1/2" screws  
4 - 3/4" screws



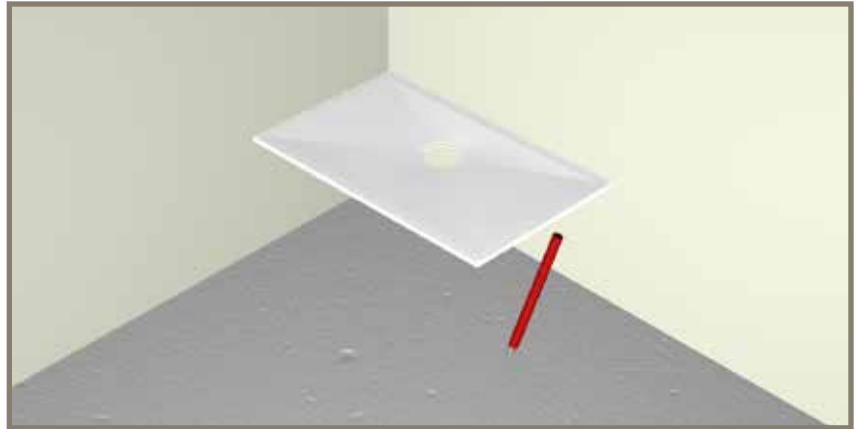
## Required Tools (not included)



- Drill
- Concrete Saw
- Reciprocating Saw
- Level
- Square
- Caulk Gun
- Hammer
- Utility Knife or Scissors
- Tape Measure
- Chisel
- Belt or Orbital Sander / Sandpaper
- Hammer Drill
- Latex or Acrylic Caulk (**DAP Dynaflex 230**)
- Concrete Anchors
- Splash Goggles
- Chemically resistant or impermeable gloves

## Step 1 > > > > > > >

For optimal performance, it is imperative there is a level surface prior to installation of new Fusion Pan. Check existing floor to make sure it is level. If it is not, please correct prior to installation. Place the pan in desired location and mark the edge of the pan on the concrete.



## Step 2 > > > > > > >

Using suitable equipment, and proper safety gear, carefully cut along your line as accurately as possible to a minimum depth of 1". It may be easiest to score the concrete approximately every 1" to 2" inside your perimeter line, to make the removal of the concrete more efficient. Now, excavate all of the remaining concrete in the marked area.

**Note:** If possible, please check or mark location of existing plumbing and electrical to avoid damaging them



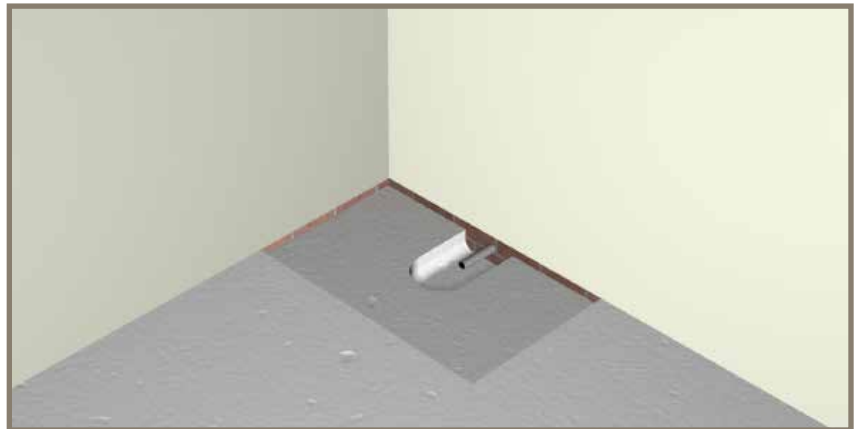
## Step 3 > > > > > > >

Place the Fusion Pan into place. Once the pan is set to the desired location, note the location of drain and remove enough concrete for the installation of the waste pipe, and drain body.



## Step 4 > > > > > > >

Install the drain in accordance with current plumbing and building codes.



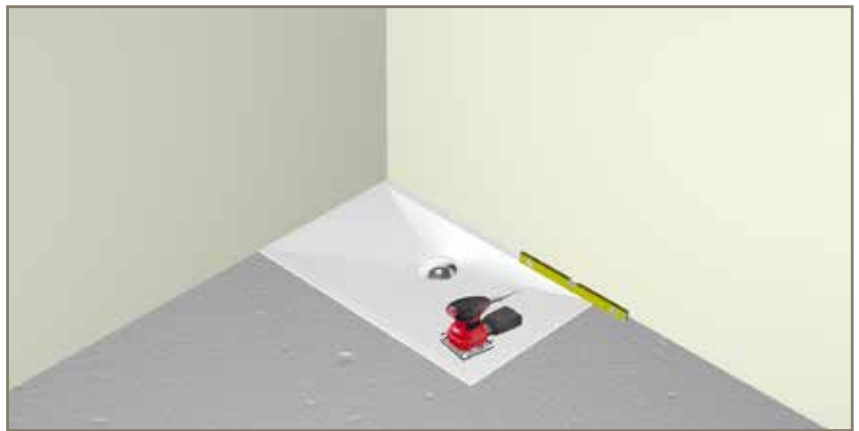
## Step 5 > > > > > > >

Set the Fusion Pan into place, and check to make sure it is level. This is important to achieve proper drainage. If for some reason you notice any rocking or flexing in the pan, you may need to build up or shave areas.



## Step 6 > > > > > > >

**IMPORTANT:** You must sand the top of you pan lightly with a palm or belt sander to roughen up the surface for proper adhesion of the vinyl floor.



## Step 7 > > > > > > >

To prep for permanent installation, remove the pan from the surface. Apply a generous amount of construction adhesive to the concrete floor. Place the pan down into position and apply pressure to adhere the Pan to the concrete.



## Step 8 > > > > > > >

Again while insuring that your pan has remained level, drill and counter sink holes into the Fusion Pan. Using cement anchors, attach the pan. Do not aggressively screw and over tighten, as you may force the Fusion Pan out of level.



## Step 9 > > > > > > >

The floor should be level with the Fusion Pan where they meet.



## Step 10 > > > > > > >

Check that the Fusion Pan is level on all four sides.

Fill in any gaps around the perimeter of the pan over 1/8" with latex or acrylic caulk.

**Do not use 100% silicone.**



## Step 11 > > > > > > >

You now want to attach the Drain adapter flange to the Fusion Pan. First apply a bead of caulk to the underside of the drain adapter flange. Lightly push the flange into place, and screw it down using the four 3/4" screws provided. Remove any excess caulk that squeezes out.



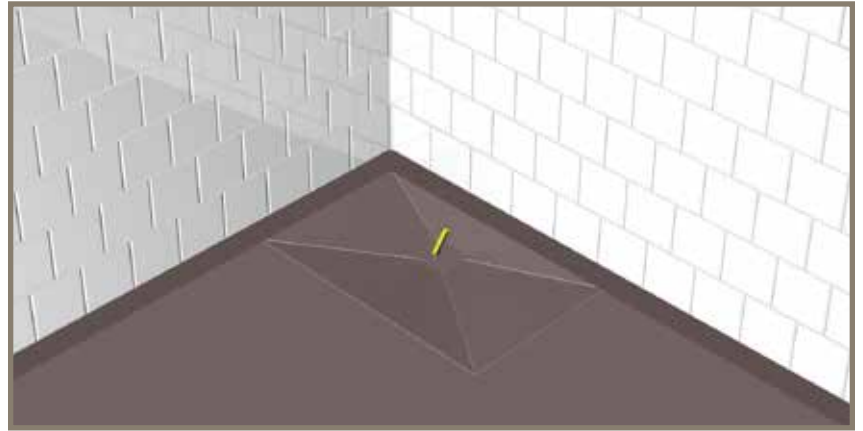
## Step 12 > > > > > > >

Make your final connections to the drain. First apply a bead of caulk to the underside of the strainer body. Pass the strainer through the drain adapter flange, and tighten. Make sure connection is snug but do not over tighten.



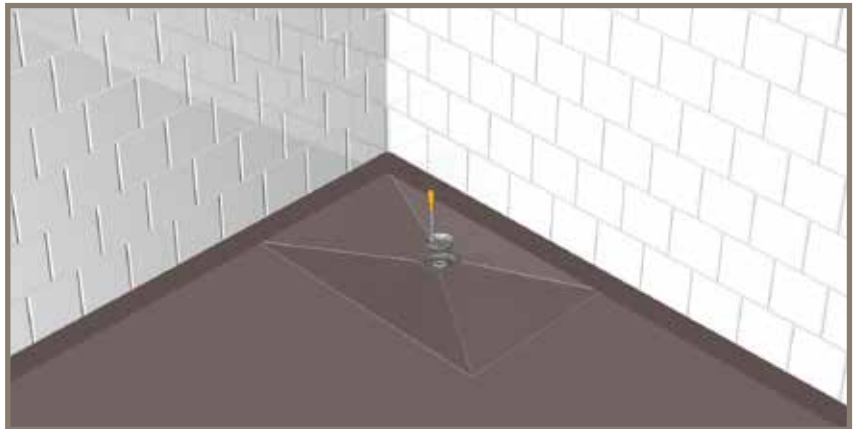
## Step 13 > > > > > > >

Lay the vinyl in an approved manner. Press the vinyl into the adapter flange and locate the center of the drain. Mark a 4 3/8" diameter circle located around previously identified center point and cut out using a sharp knife.



## Step 14 > > > > > > >

Press the edges of the vinyl into the recessed area of the base and secure it with the clamping ring using screws provided (M5).



## Step 15 > > > > > > >

Finally, attach the top cover.

Your Fusion Pan installation is now complete.

Enjoy!

