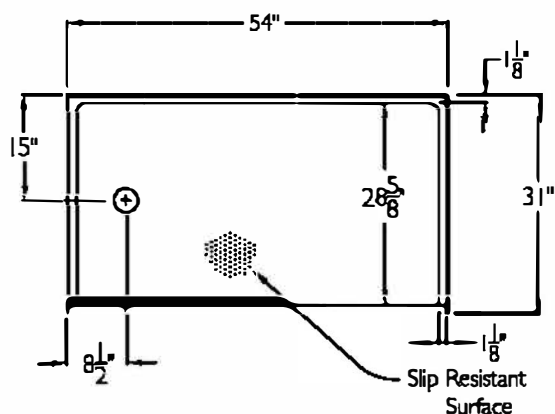


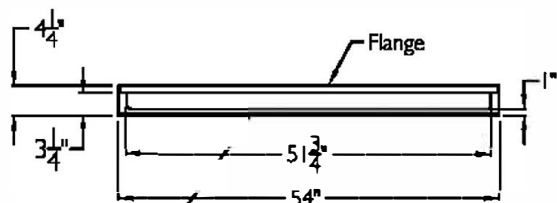


TRENDING ACCESSIBILITY

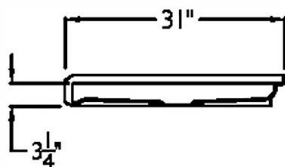
TOP VIEW



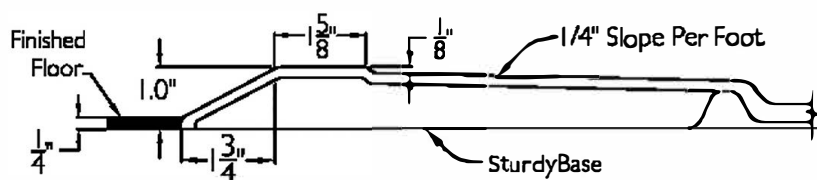
FRONT VIEW



SIDE VIEW



CROSS SECTION OF THRESHOLD



SUBMITTAL

This shower enclosure shall be model TAPP 54 30 BF 1.0 base left or right drain. Finished surface shall be of a sanitary grade solid surface exhibiting a minimal thickness of 55 dry mils and a finished cured Barcoal hardness of 80-90 as tested with ASTM D-2583. Unit construction shall be of a molded reinforced fiberglass with a 15% minimum fiberglass content.

The unit shall have outside dimensions of 54" x 31" x 4 1/4" with a 1.0" threshold.

The unit shall meet ANSI Z124.1-2, BOCA, NAHB, UPC, CSA, shall meet the requirements of the Southern Building Code.

HANDED BY THE DRAIN

The enclosure shall be equipped with the following features:

- 1) Low entry 1.0" threshold,
- 2) self sustaining bottom,
- 3) Slip resistant surface on floor,
- 4) Solid surface finish,
- 5) Integral mounting flange.

THIS UNIT FEATURES THE OUTSIDE DIMENSIONS OF 54" AND 31". FINISHED WALLS ABOVE THE SHOWER BASE BY OTHERS.

THIS SHOWER BASE IS AVAILABLE WITH SECTIONAL WALL SYSTEM MODEL: TAP 5430 BF 1.0 5P.

Job Name	Approved By	Name	Date	Trending Accessibility	
Project No	Architect			Model No. TAPP 5430 BF 1.0 Base-1	
	Engineer			Drawing No. TAP 5430 BF 1.0	
	Rep			Date issued. 5-7-12	Drawing Rev. 8-13-13
	Wholesaler			Material. GELCOAT	
	Comments			Color.	
				Dimensions are in inches. Due to the nature of the materials dimensions may vary ± 1/2"	